

# Southampton & District Beekeepers Association Newsletter



"Yes, the bees will be swarming soon"

## "Forag'ins" Spring 2024

Editor: Janek Margetts

Email: [newsletter@southamptonbeekeepers.co.uk](mailto:newsletter@southamptonbeekeepers.co.uk)

Contents: Dates for your Diary – Speakers – Members  
contributions

**our Winter speakers on Zoom ended this month with an interesting  
talk "Flying with bees" from ex-pilot Keith Bartlem.**

Keith is a Master Beekeeper, Bee Inspector and examiner for the BBKA.

**HBA Website Updates - Members Area**- Check out the latest content using this link

<https://hampshirebeekeepers.org.uk/members/>

Password : Snowdrop

"The Newsletter is intended to inform the membership of what the association is involved with and an invitation to our members to participate. It is not intended as a source of bee-keeping know how "how do I do it?". That can be accessed on the association web site.

### DIARY DATES

**BBKA Spring Convention 2024** – Friday 12th April - Sunday 14th April

Harper Adams University Shropshire TF10 8NB

Lectures, Workshops & Seminars.

Bumper Trade Show Sat 13<sup>th</sup> April

Latest information [www.bbka.org.uk/springconvention](http://www.bbka.org.uk/springconvention)

### Association Apiary meetings

These are arranged throughout the season April to September at the Nursling apiary. They are a valuable informal opportunity to discuss with other members if you are unsure what to do next or have problems with your colony.

**The first meeting is 10.30 on the April 6<sup>th</sup> "Spring Inspection" and thereafter at fortnightly intervals, full details for the season are on the programme card for 2024.**

---

### **T.B.A In late June/July**

An association visit to Gilbert White's House and Gardens

The Wakes, High Street, Selborne, GU34 3JH

The admission price for a pre-booked group is £12.00 per head. This includes an introductory talk and admission to the museum and gardens. (Standard entry £18.00)

The beautifully restored house and gardens of natural history pioneer Gilbert White. Regarded as the 'Father of Ecology'.

The museum hosts collections belonging to Captain Lawrence Oates, who was a member of Captain Scott's fateful 5 man team to reach the South Pole.

When reaching the pole on the 17th of January 1912, they found Amundsen's Norwegian flag and tent already there.

On their return journey Oates suffering with gangrene and frostbite and in an act of supreme self sacrifice, walked from the tent into a blizzard and certain death, with the words "I am just going outside and may be some time."

---

The association attends several events promoting bees and informing the public. (The committee is always open to extra offers of help at these events. For more information contact our secretary)

**Monday 6<sup>th</sup> May 10.00 -16.30**

**May Day Fayre Itchen Valley Country Park.**

This is a free event and kicks off with a celebration of summer showcasing Morris dancing, live music from Otterbourne Brass Band, plus lots of family activities and an artisan market!

**Sunday 26<sup>th</sup> May 11.00 – 16.00**

**Mayfest at the Brickworks Museum, Swanwick**

The Mayfest is a family-friendly fun at the Brickworks Museum – a celebration of spring. Featuring a fun dog show, many children's activities, Morris dancers, live music and many steam engines.

Inside, the Brickworks' machinery will be under steam and the miniature railway will be giving rides around the track.

**Saturday 27 July 2024, 12 – 7pm**

**TriFest at Riverside Park, Bitterne**

The event was cancelled in 2023 due to bad weather but is back in 2024.

A well attended event, music and various trade tents.

-----  
**Saturday 15<sup>th</sup> June**

**Sparsholt College. Bee Health day arranged by HBA**

Hampshire Beekeepers' Association will host this event in partnership with our Regional Bee Inspectors. The free event will combine talks from a variety of experts with practical hands-on learning.

An excellent opportunity to meet the Bee Inspector Dan Etheridge

Reading about EFB and AFB in text books and looking at photographs and videos is one thing but being able to actually see the frames, pull out and dissect infected grubs and carry out the matchstick test will increase your confidence in being able to identify these diseases.

**Sunday 6<sup>th</sup> October**

**HBA Honey Show and Convention. Sparsholt College**

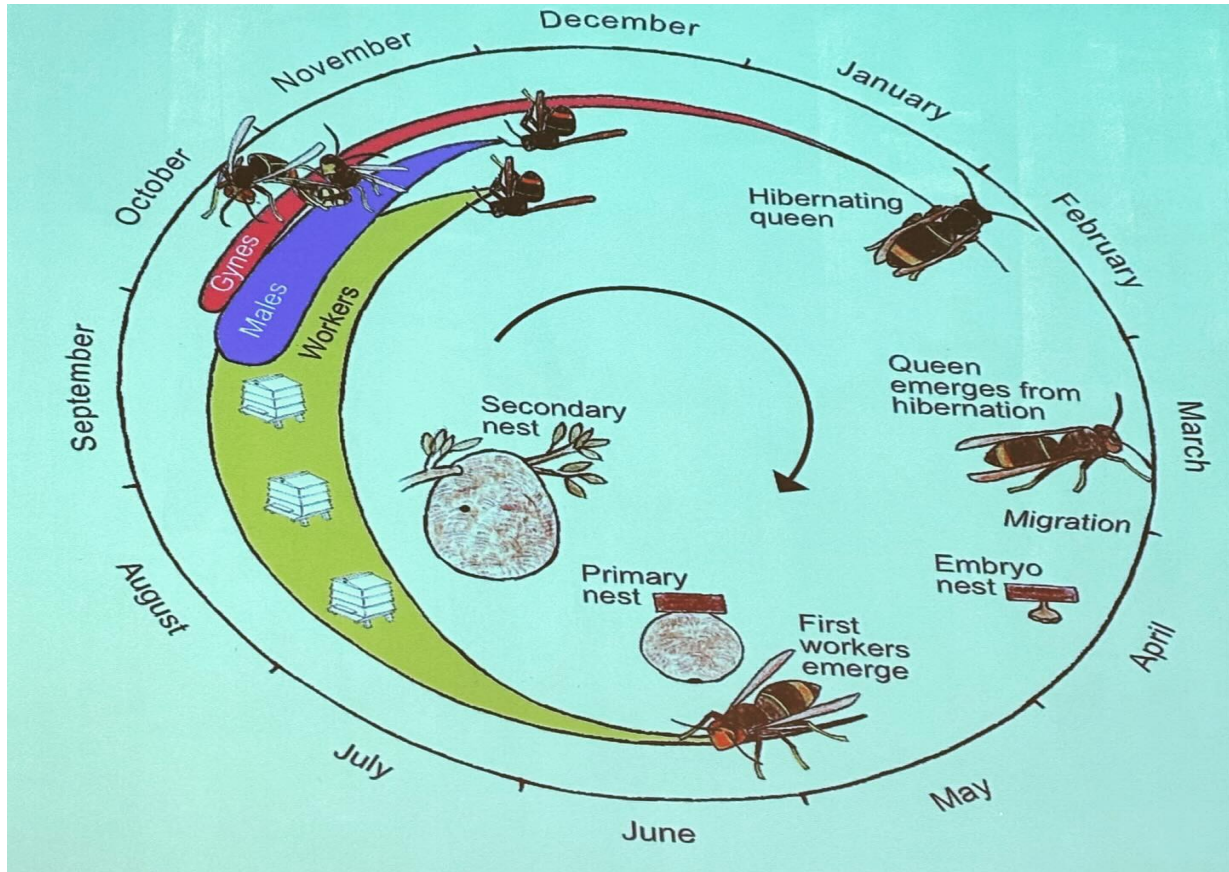
Workshops and lectures, subjects to be confirmed

**Saturday 26<sup>th</sup> October times t.b.a**

"Cooking with Honey" Peartree Church Hall

HBA offers the use of its ZOOM account to all associations within Hampshire. If you want to book a place on the HBA Zoom. Please make contact at [HBA Zoom Bookings](#)

## Asian Hornet



I will not add anything to the multitude of information out there on AH, other than refer you to the above AH life cycle above.

Alan Baxter who is the lead AH co-ordinator for Hampshire.

Gerry McFadden is the co-ordinator for Southampton Beekeepers

There are a number of talks/discussions on Youtube from Andrew Durham and Nigel Semmence for you to watch.

On the 11th of March confirmation of an Asian hornet being found in a potting shed in Ash, Kent. The finding was around 5 miles from a nest found and destroyed in 2023 near Canterbury, Kent. "They have obtained a footing in UK"

## In the apiary

### Swarm Collection

The swarm phone is passed around the volunteer members who hold it for two weekly periods. The number is on the BBKA web site so members of the public can inform us where a swarm has collected. The swarms are collected for members who are ready to accept them at a small cost of £20.00. There is controversy but the phone cannot be manned 24/7, however the caller will be contacted at the earliest opportunity.



## Swarm control

There are several sites where the information can be found, including our association web site.

The principle of the artificial swarm is to separate the queen and flying bees from the brood and nurse bees. This is achieved by a couple of simple colony manipulations which exploit the tendency of flying bees to return to the location of the hive from which they took their orientation flights.



- “Pagden artificial swarm” the queen is left in the original location and is joined by all the flying bees. The brood and hive bees end up rearing a new queen.
- The Nucleus method – a nuc colony is established with the queen, some bees and brood. The parental colony is left to rear a new queen.
- The Vertical split – the same as the Pagden artificial swarm, except conducted vertically rather than horizontally. Uses less equipment and more muscle.