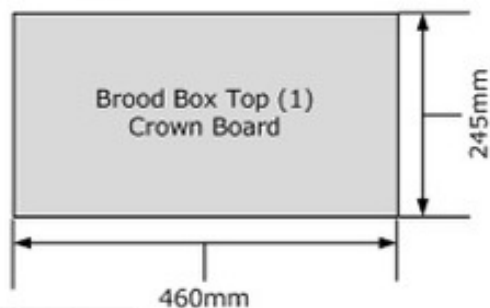
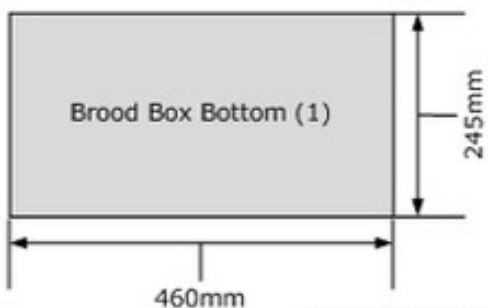
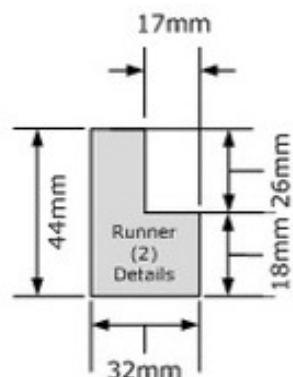
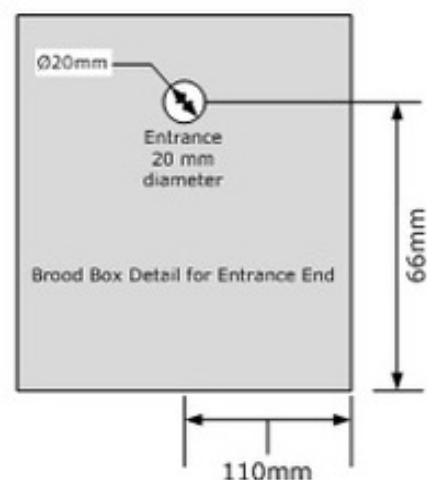


For a Hoffman Frame  
= 35mm wide  
**6 Frames**  
= 210 mm wide  
Total width  
= 210mm + 10 mm



Width of bottom box 220mm +  
2 thickness of wood (12mm)  
 $220 + 12 + 12 + 1 = 245\text{mm}$

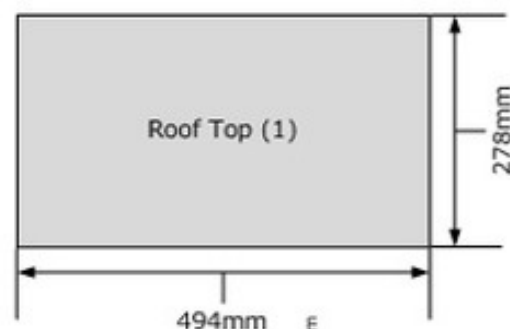
BS Standard Nuc		Brood Box Cut List	
ITEM	QTY.	DIMENSIONS	THICKNESS
Side	2	460mm by 235mm	12mm
End	2	220mm by 212mm	12mm
Top	1	460mm by 245mm	12mm*
Bottom	1	460mm by 245mm	12mm*
Runner	2	220mm by 44mm	32mm*



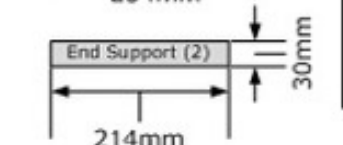
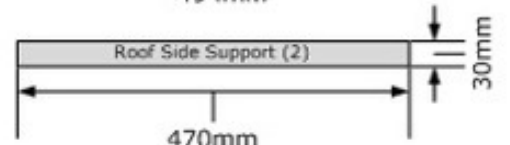
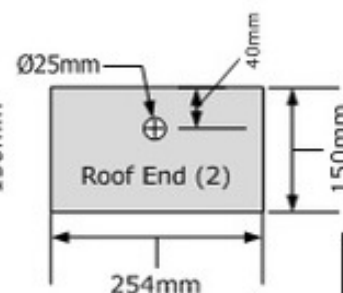
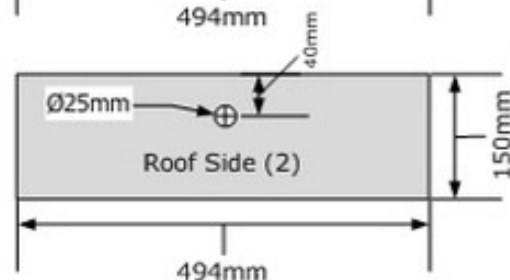
Runner Not to Scale

Metal Runners are  
6mm tall.  
 $24 - 6 = 18$   
 $18 - 10 = 8$   
10mm for frame top  
bar.  
8mm top bee space.

Frame runners  
220mm long



Roof top  $460 + 5 + 5 + W + W$   
 $470 + 24 = 494\text{mm}$   
5mm clearance 12mm wood

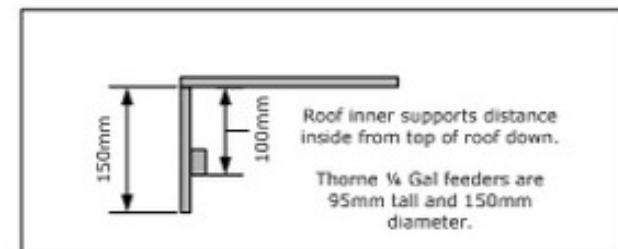


Internal supports are  
for the roof to rest on.  
25mm holes and mesh  
for vents have been  
added 40mm down in  
center of each panel.

Roof Cut List			
ITEM	QTY.	DIMENSIONS	THICKNESS
Top	1	494mm by 278mm	12mm*
End	2	254mm by 150mm	12mm*
Side	2	494mm by 150mm	12mm*
Support	2	470mm by 30mm	18mm
Support	2	214mm by 30mm	18mm*

Entrance planned is the blue  
plastic disc.

\* If the thickness is increased  
these dimensions will need  
increasing by the difference  
times two. Each runner  
would need reducing by the  
single thickness.  
 $18 - 8 = 10$  so 20mm would  
need adding.



TITLE	BS Nuc 12mm Ply	DRAWN BY	Martin Adams
SCALE	1: 10	DATE	21/07/2007